

ArtfulBits License Manager

for Microsoft® SharePoint®



Install Guide

System Requirements	1
Preparation for Installation	2
Installation.....	2
Activating / Deactivating Feature	6
Product Updates	7
Uninstallation / Repairing	8
Remarks.....	8

System Requirements

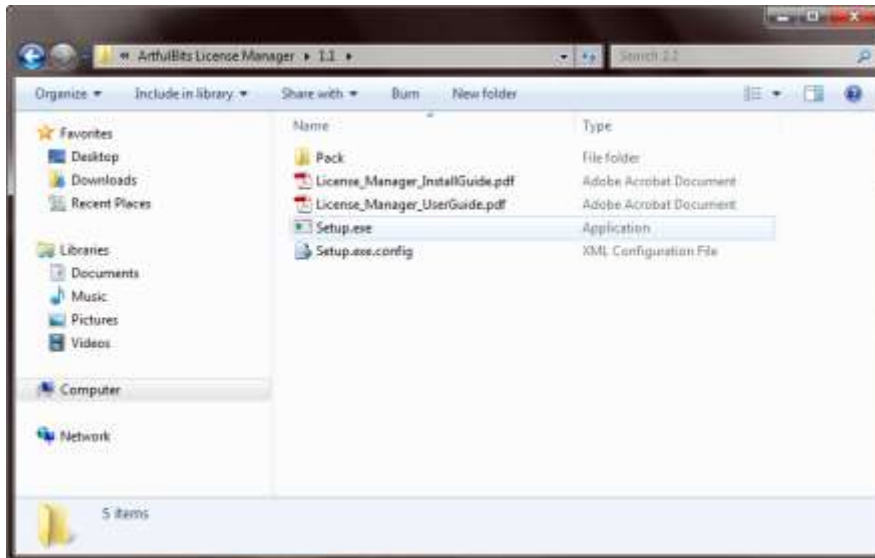
Operating Systems:	Microsoft Windows Server 2003 x86/x64 Microsoft Windows Server 2008 x86/x64 Microsoft Windows Server 2008 R2 Microsoft Windows Server 2012
Servers:	SharePoint Release: <ul style="list-style-type: none"> ➤ SharePoint Foundation 2013 or SharePoint Server 2013 (for SP2013 products) ➤ SharePoint Foundation 2010 or SharePoint Server 2010 (for SP2010 products) ➤ Windows SharePoint Services v3 or Microsoft Office SharePoint Server 2007 (for SP2007 products)
Browser:	<ul style="list-style-type: none"> ➤ Internet Explorer 8+ ➤ Mozilla Firefox 2.0+ ➤ Apple Safari 3.0+ ➤ Google Chrome 2.0+

Preparation for Installation

Before installation, please, check that your target server meets License Manager system requirements (see above).

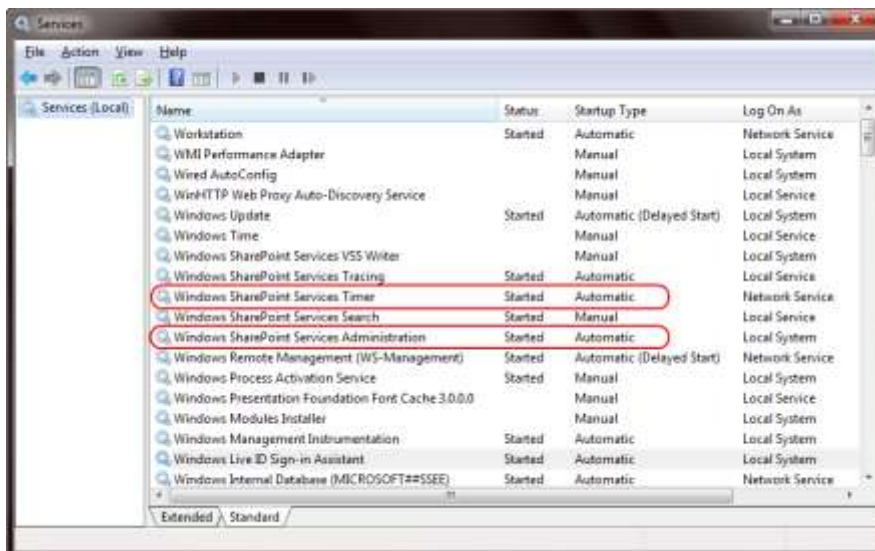
Installation

Download License Manager installation package from ArtfulBits website, unpack the file, and run "Setup.exe".



Note: You must be the SharePoint Farm Administrator and following MS Windows services should be running:

- Windows SharePoint Services Administration
- Windows SharePoint Services Timer



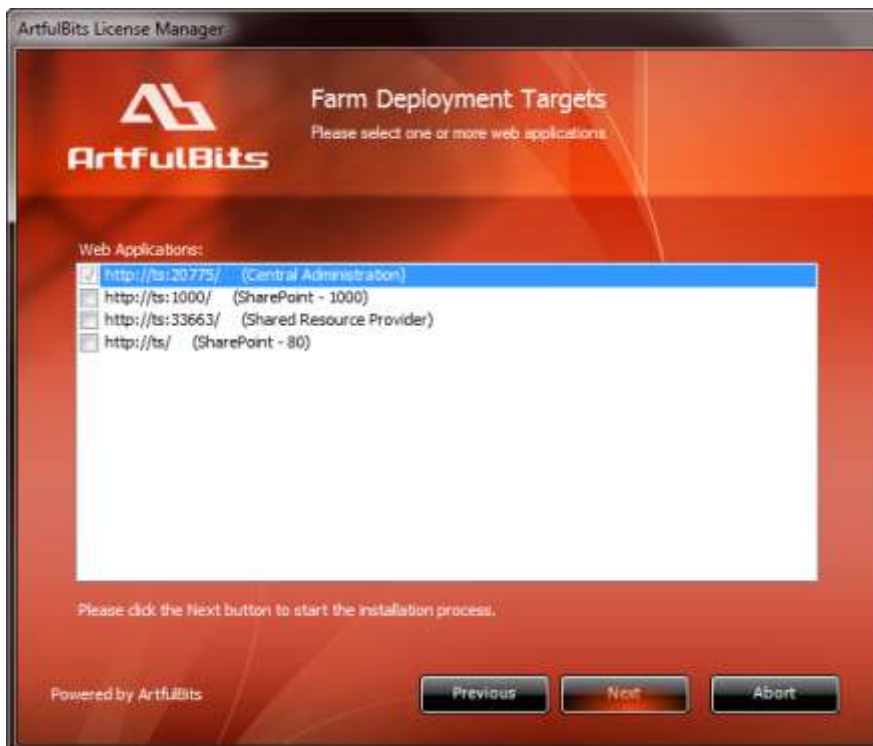
After system check is finished, click "Next".



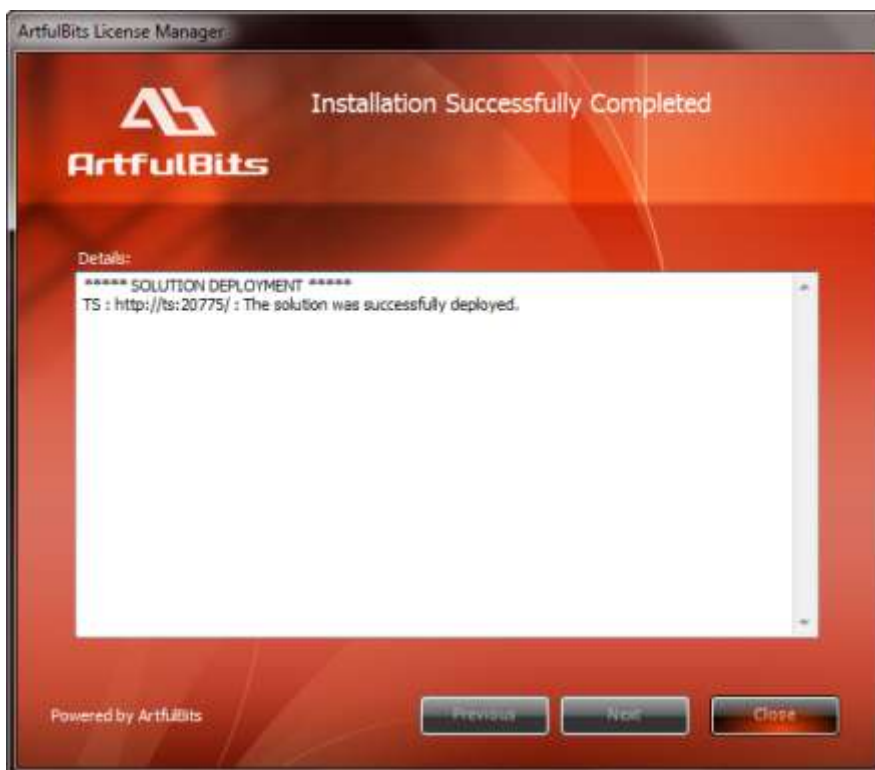
After reading License Agreement, click "Accept" and go to next step.



Select one or more web applications and click "Next".

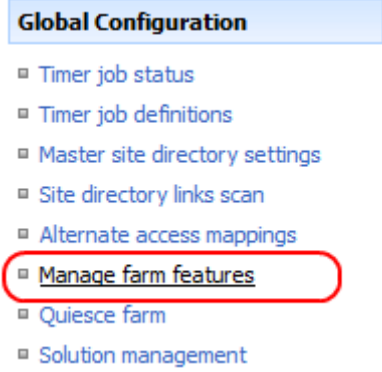



Wait for install to succeed, click "Next" to check deployment status details.



Activating / Deactivating Feature

Open the SharePoint Central Administration.

SharePoint 2007	SharePoint 2010
<p>Choose "Operations". Click on "Manage farm license".</p>  <p>Global Configuration</p> <ul style="list-style-type: none">Timer job statusTimer job definitionsMaster site directory settingsSite directory links scanAlternate access mappingsManage farm featuresQuiesce farmSolution management	<p>Click on "Manage farm license".</p>  <p>System Settings Manage servers in this farm Manage services on server Manage farm features Configure alternate access mappings</p> <p>Backup and Restore Perform a backup Restore from a backup Perform a site collection backup</p>

In SharePoint farm feature list, activate ArtfulBits License Manager feature (if deactivated).

This page allows you to manage SharePoint-wide features.

Name	Status
 ArtfulBits License Manager Allows managing licenses of ArtfulBits products.	<input type="button" value="Deactivate"/> <input checked="" type="button" value="Active"/>

Product Updates

Process of updating ArtfulBits Column Data Adapter is pretty straightforward - just download latest [installation](#) package and execute **Setup.exe** from it. After system check completes, select an "Upgrade" option and then follow setup wizard instructions.



Uninstallation / Repairing

Execute **Setup.exe** from your installation package. On the Repair and Remove section, select Remove radio button and click "Next", the License Manager will be uninstalled. Or select "Repair" - to repair the License Manager.



Remarks

Information in this document may be outdated. Please, visit www.artfulbits.com for the latest product version.