

ArtfulBits Password Change Web Part

for Microsoft® SharePoint®



Install Guide

System Requirements	1
Preparation for Installation	2
Installation.....	2
License Management.....	6
Activating / Deactivating Feature	8
Product Updates	9
Uninstallation / Repairing	10
Remarks.....	10

System Requirements

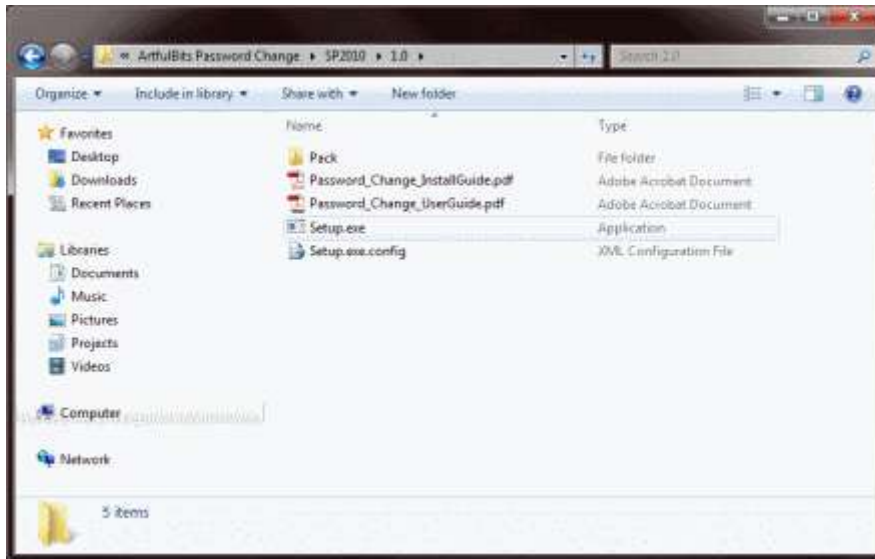
Operating Systems:	Microsoft Windows Server 2008 x64 Microsoft Windows Server 2008 R2 Microsoft Windows Server 2012
Servers:	SharePoint Release: <ul style="list-style-type: none"> ➤ SharePoint Foundation 2013 or SharePoint Server 2013 (for SP2013 products) ➤ SharePoint Foundation 2010 or SharePoint Server 2010 (for SP2010 products)
Browser:	<ul style="list-style-type: none"> ➤ Internet Explorer 8+ ➤ Mozilla Firefox 2.0+ ➤ Apple Safari 3.0+ ➤ Google Chrome 2.0+

Preparation for Installation

Before installation, please, check that your target server meets ArtfulBits Password Change Web Part system requirements (see above). Also, it is recommended to install ArtfulBits License Manager before (if it is not installed).

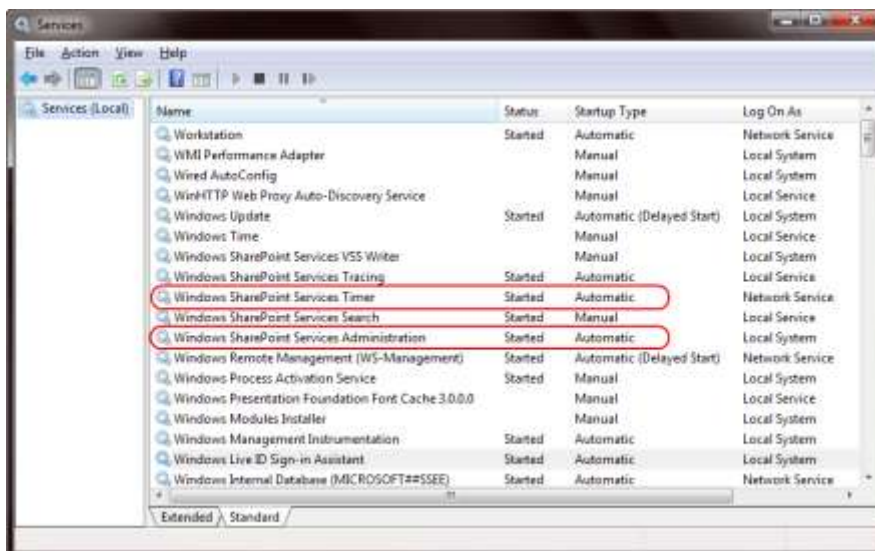
Installation

Download Password Change installation package from ArtfulBits website, unpack files, and run "**Setup.exe**".



Note: You must be the SharePoint Farm Administrator and following MS Windows services should be running:

- SharePoint 2010 Administration
- SharePoint 2010 Timer



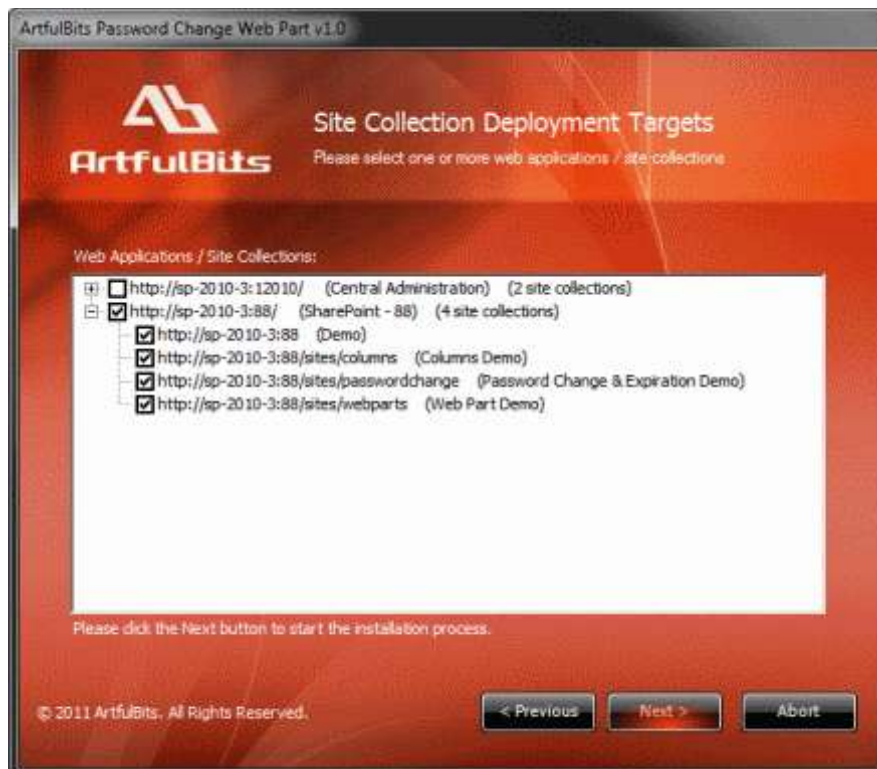
After system check is finished, click "Next".



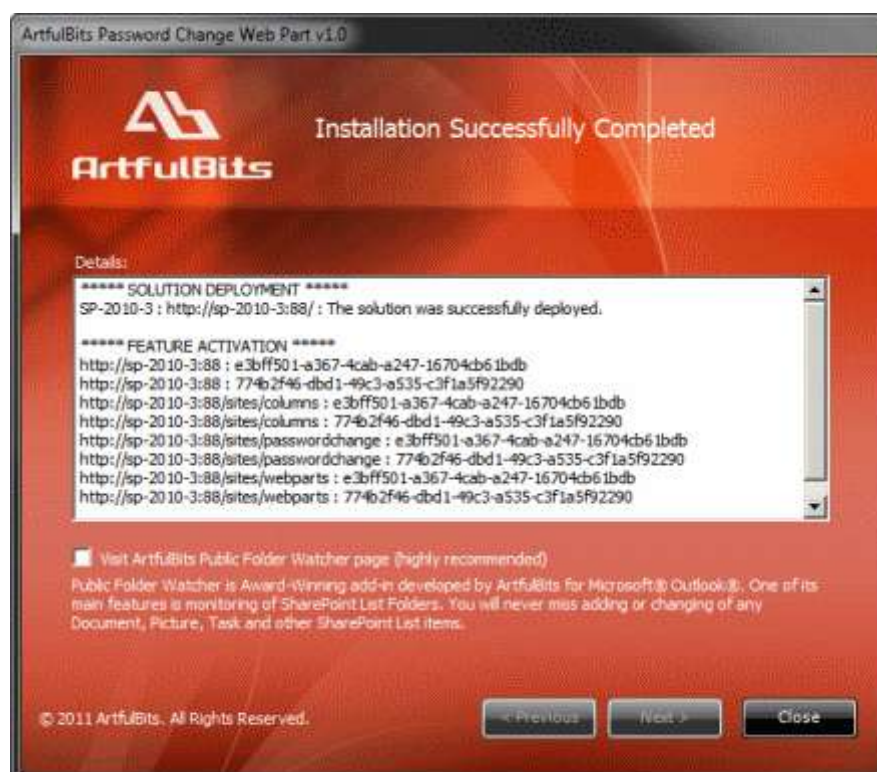
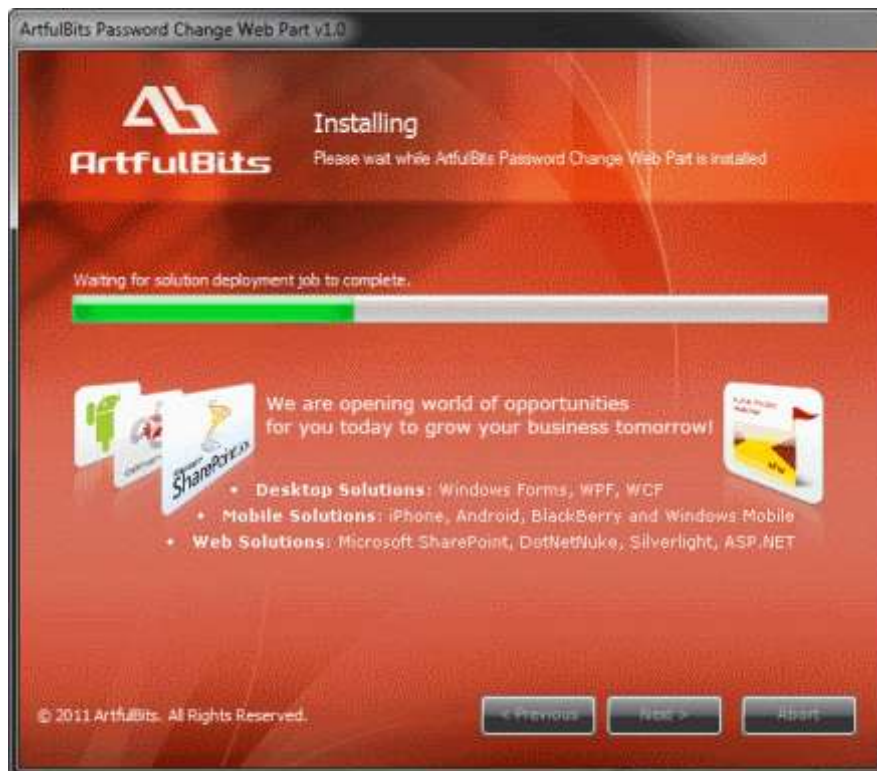
After reading License Agreement, click "Accept" and go to the next step.



Select one or more web applications and click "Next".



Wait for install to succeed, click "Next" to check deployment status details.



License Management

ArtfulBits Password Change Web Part uses **Per-Farm Licensing Model** (each license is bound to single SharePoint Farm ID). For more details about licensing models please visit <http://www.artfulbits.com/purchase/licensing.aspx>.

Product works in unlicensed mode for three days from the moment of installation. In this mode all the product features are unlocked same way as with trial license. After these three days either trial license or full license should be entered for product to function.

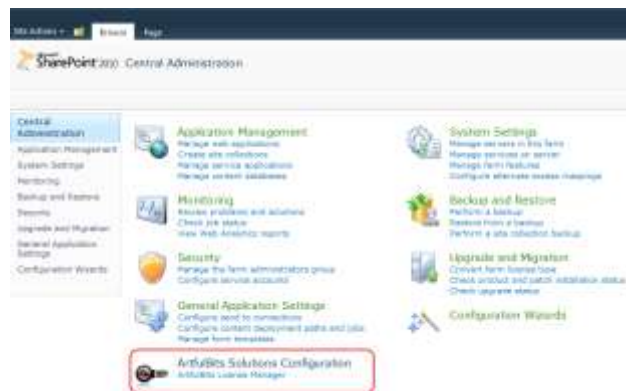
To get a Trial license navigate to:

<http://www.artfulbits.com/products/sharepoint/sales/get-trial-license.aspx?productcode=SPPSWC001>






You can buy the product by the following link:

<http://www.artfulbits.com/purchase/purchase.aspx?productcode=SPPSWC001>

After ArtfulBits License Manager is installed, go to the SharePoint Central Administration page and click on "ArtfulBits License Manager" link:



This page shows all ArtfulBits products and their license statuses.

Product	Edition	License Status
 ArtfulBits Cascaded Lookup Column v1.38	Standard	Full license
 ArtfulBits Category Column v1.6	Evaluation	No license
 ArtfulBits Column Data Adapter v1.0	Evaluation	No license
 ArtfulBits Column Permissions v1.0	Standard	Full license
 ArtfulBits Cross-Site Lookup Column v1.7	Evaluation	Trial license (Expiring in 18 day(s))
 ArtfulBits Discussion Column v1.54	Standard	Full license
 ArtfulBits Link to Document Column v1.13	Evaluation	No license

Click on product name to view license details.

Product	Artfulbits Password Change Web Part v1.0 Allows users to change their own passwords from within the Sharepoint environment.
Product Edition	Evaluation Please visit following link for product editions comparison chart.
License Status	No license (You can use product for 3 more day(s)) Note: in trial or unlicensed mode all product features are available for evaluation. After trial period license should be purchased which will determine product edition and available feature set. Please visit following link for product editions comparison chart.
License Operations	Farm ID: <input type="text" value="b46ace34-9360-4e30-9406-45837fa4367a"/> <input type="button" value="Enter License"/> <input type="button" value="Copy Farm ID to Clipboard"/> Get free trial license Go to purchase page

If product is not licensed you can click "Enter License" link and enter license key (trial or full) into textbox. For upgrading product edition click "Convert License" and enter new license of target product edition.

License Operations	Farm ID: <input type="text" value="b46ace34-9360-4e30-9406-45837fa4367a"/> <input type="button" value="Enter License"/> <input type="button" value="Copy Farm ID to Clipboard"/> Get free trial license Go to purchase page
	<pre> 19E4FCC3F3B6D0E7E4809554C900F09683BA64C032AE29788E0D98E5E957C8D460BA7179038D23 1090F00737038CE18B812D879633BE7980C995DCFA9525B2E8307477DA743F790E50D326F3D2030 5DFEB63812CF762C81406CAD09E2A0DA23C83B28F9812865B2D5A82E5CC57D4ED5BF0E8B7EBF88 ED41B52FFC0ED5C6340FAD074CC0848827F28EDD1CF74C60F50968C2D35C56B3A1901E8D1D955A 04FC0DDA18ED4F662A91A48E8C71F0CA97CB427823588577B47C2DB412F8C9DC6D9CA11919B13F 6D982B7D503981D49C74C8969E6CBFE05CBC76CD52B8473C44587F1FD29495A914835B2CF12E91 39046E87337E5FE2F7841D754D7C26EC9F9D66A </pre>
	<input type="button" value="Activate"/> <input type="button" value="Cancel"/>

Pressing "Activate" button will verify the key and in case of verification success license status will be updated.

Product Edition	Standard Please visit following link for product editions comparison chart.
License Status	Full license Note: in trial or unlicensed mode all product features are available for evaluation. After trial period license should be purchased which will determine product edition and available feature set. Please visit following link for product editions comparison chart.

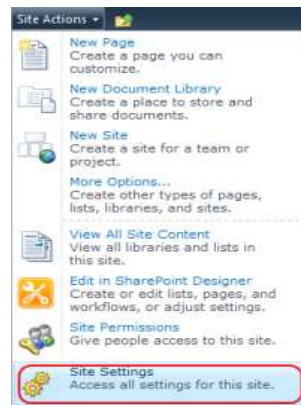
Note: in trial or unlicensed mode **all** product features are available for evaluation. This way you will be able to try each and every feature available in the product line which will give you good understanding of what feature set will be necessary for you and it will be easier to come up with the decision which product edition should be purchased. After trial period Change full license should be purchased which will determine product edition and available (unlocked) feature set.

Activating / Deactivating Feature

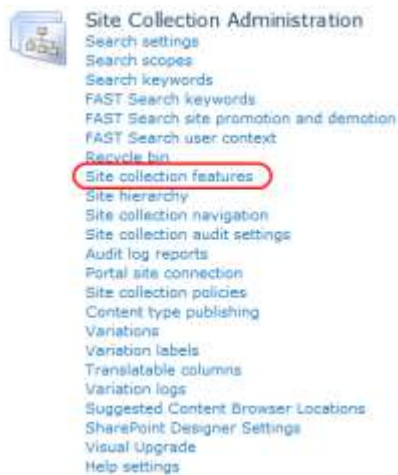
ArtfulBits Password Change Web Part product contains two site collection features:

- **ArtfulBits Password Change Web Part** feature enables using Password Change Web Part in SharePoint pages
- **ArtfulBits Password Change Action** feature adds "Change Password" action to user personal menu.

To activate them, click "Site Actions" menu in the root site of one site collection, then click "Site Settings":



Click "Site collection features" link in Site Settings page:



In SharePoint Site collection feature list, activate ArtfulBits Password Change Web Part and ArtfulBits Password Change Action features (if deactivated):



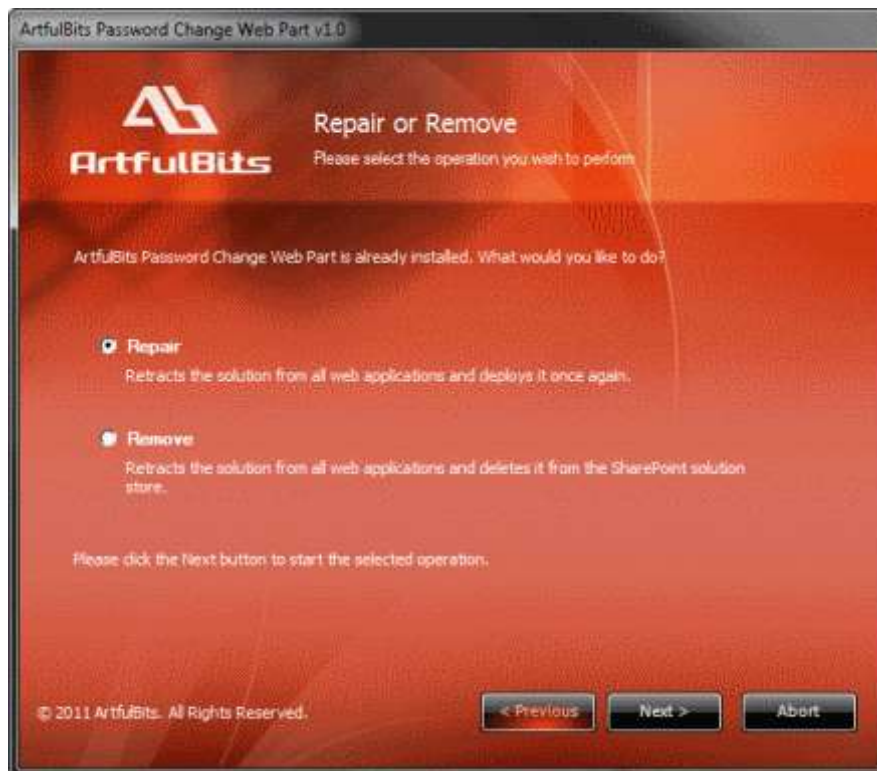
Product Updates

Process of updating ArtfulBits Password Change Web Part is pretty straightforward - just download latest [installation](#) package and execute **Setup.exe** from it. After system check completes, select an "Upgrade" option and then follow setup wizard instructions.



Uninstallation / Repairing

Execute **Setup.exe** from your installation package. On the Repair and Remove section, select Remove radio button and click "Next", the ArtfulBits Password Change Web Part will be uninstalled. Or select "Repair" - to repair the ArtfulBits Password Change Web Part.



Remarks

Information in this document may be outdated. Please, visit www.artfulbits.com for the latest product version.